

Slot House

Alterations & Additions

Private Residence

Brighton Le Sands, Sydney

2015

Floor Space 139.5m²

Site Area 386.2m²



Flushed lining to the rear extension as the deck extends from the interior.



A seamless blend through the dining, living and exterior space.



A textured bathroom with a simple palette allowing the natural light to bounce through the space.



A modest addition to a Semi-detached Californian Bungalow in Brighton Le Sands. The project evolved from the client's desire to breathe new life into the character filled home, and create generous, light-filled living spaces with a better connection to the well established rear garden.

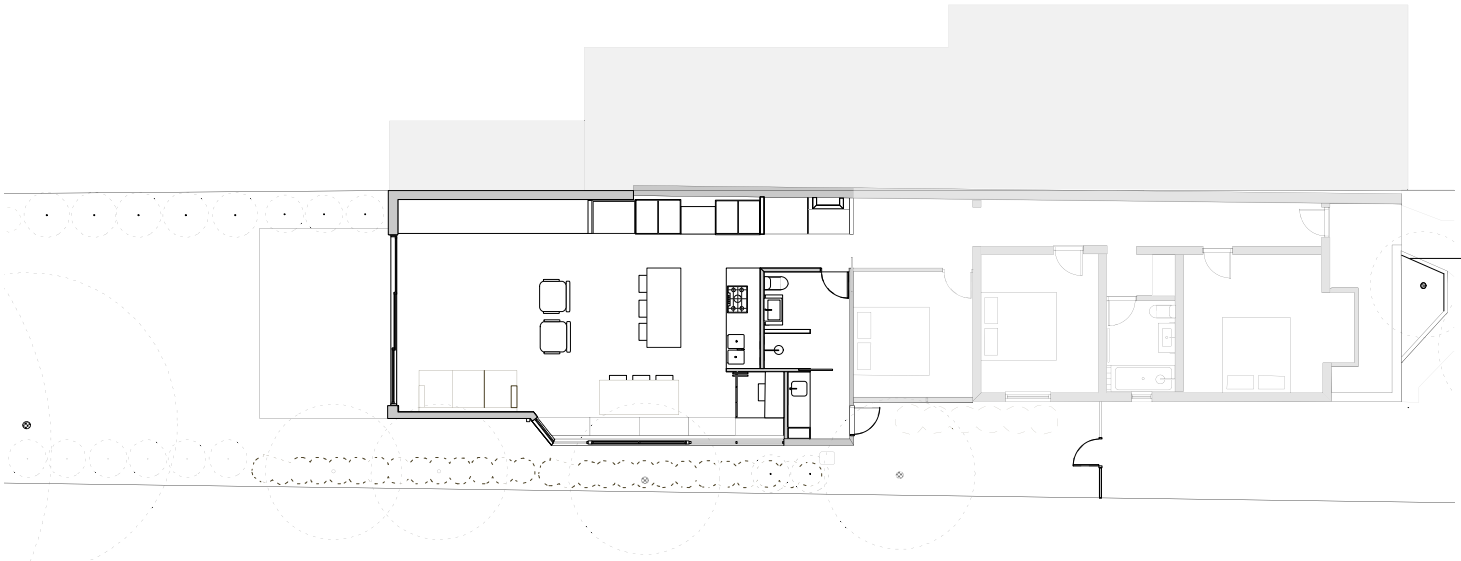
The spatial planning for the new rear addition derived from both the the desire to seamlessly blend the old with the new . The idea of "The Slot " allowed the new room at the rear to be divided into parts that defined both the relationship to the garden as well as the function of the space.

The side "slot" saw the re-introduction of an existing wall of windows , as an abstract view to the side garden, enhanced by arranging a study nook and dining area alongside to take in the intimate view .The open plan kitchen acts as the focal point for this interaction.

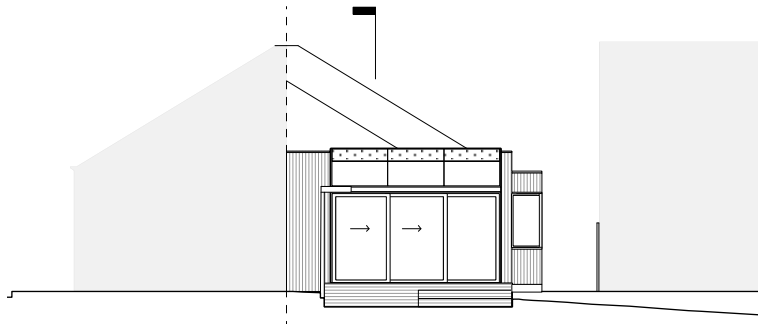
The circulation "slot", was driven by a need for more storage . The wall of storage defines the direct path through the house and enliven by dramatic skylights, bringing pools of light into the room discreetly concealing the functional parts of the kitchen.

The rear addition is a large picture window, with sliding doors, that when opened extends the living space into the rear garden. Frameless glass overhead panels enable framed views of the sky above the trees and a sense of a floating roof.

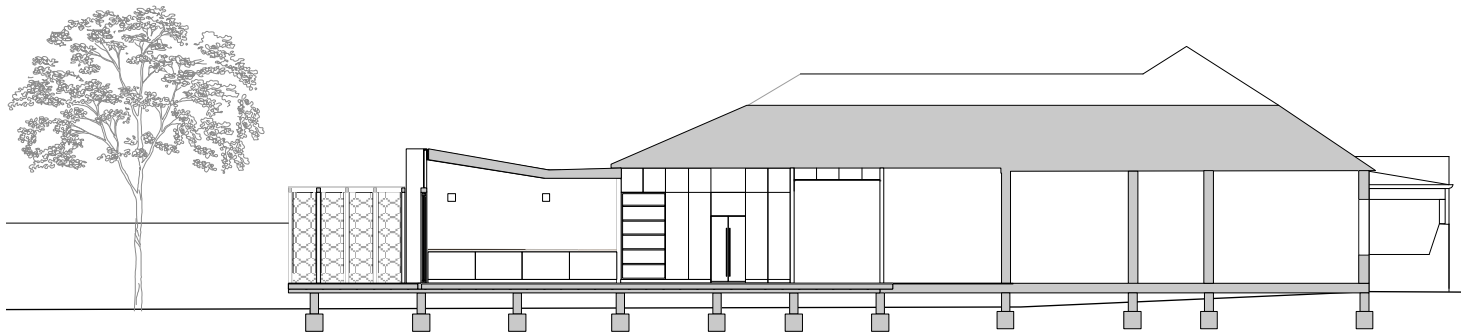
The layout was designed to achieve passive heating and cooling while materials were all carefully selected for their embodied energy and contribution to the sustainability outcomes desired by the client.



Ground Floor Plan
1:200 @ A4



Rear Extension Elevation
1:200 @ A4



Long Section
1:200 @ A4