

Skylight House

Alterations & Additions

Private Residence

Paddington, Sydney

2015

Floor Space 127m²

Site Area 117.5m²



Front entry from street. A yellow door to extend the interior detail to the exterior.



A fluid and spacious environment from the living room to the backyard.



A minimal bathroom design with warm finishes.



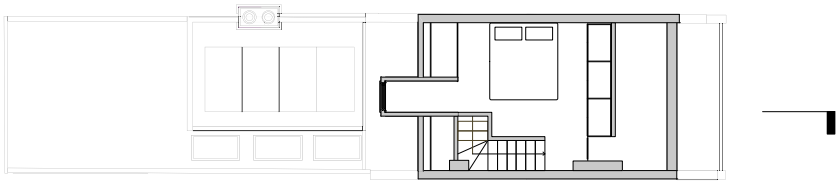
A classic terrace house in the Heritage Conservation Area of Paddington takes on a new lease of life to bring light and well needed space for a young family. Designed to create a subtle transition from old to new the addition places the Kitchen at the centre of the home with a new living room opening out to the rear courtyard garden featuring a Heritage listed Sandstone wall a relic of the original villa estate.

A new bedroom is added to the rear wing of the first floor, the Attic is converted into a Bedroom and new bathrooms are slotted in to the Ground and First Floor. The large Kitchen houses a wall of joinery, hiding an efficient laundry cupboard and storage area, purposefully designed with a very simple material palette to blend quietly into the space.

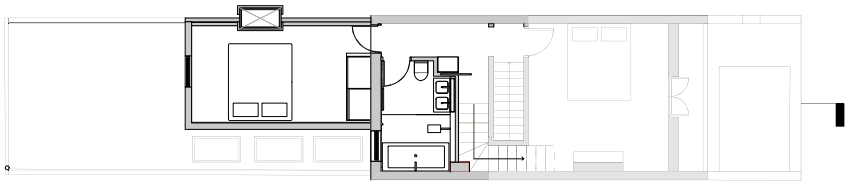
The introduction of a row of skylights features in the new addition. They mark the circulation path between the dining room and the garden, via the Kitchen and Living room. Bringing light and views of the sky into the centre of the house, they completely transform the once dark and cramped space into a light-filled home with a wonderful sense of space.

A simple colour palette enhances the Period features of the original home while creating a discrete connection between new and old. Pale Oak floors line the entire Ground Floor further enhancing the smooth transition and sense of calm.

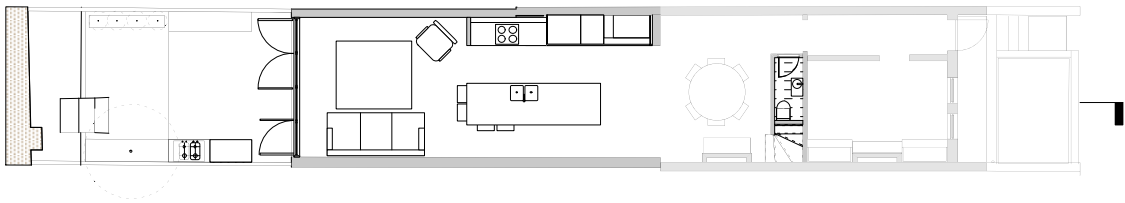
Skylight House



Second Floor Plan
1:200 @ A4



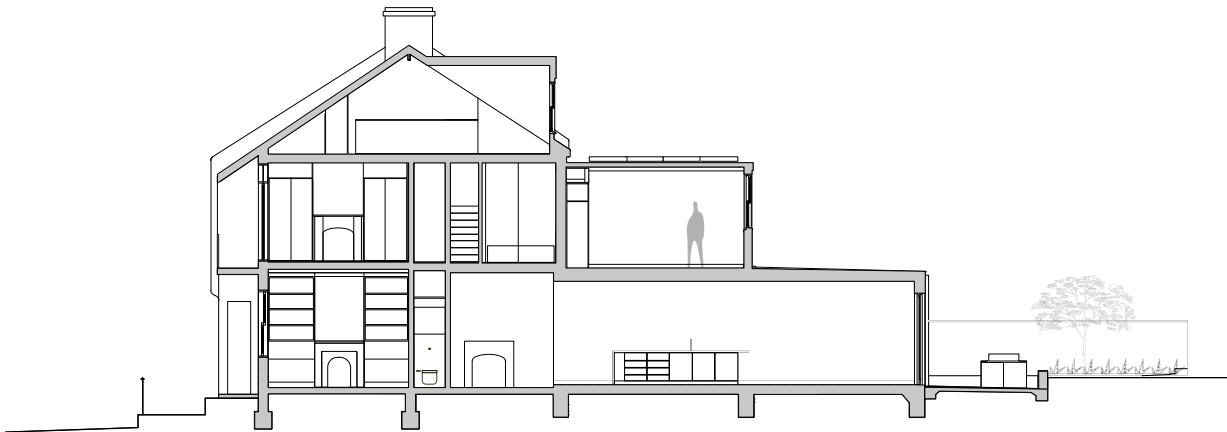
First Floor Plan
1:200 @ A4



Ground Floor Plan
1:200 @ A4



Rear Extension Elevation
1:200 @ A4



Long Section
1:200 @ A4