

## Pavilion House

*Alterations & Additions*

*Private Residence*

*Ryde, Sydney*

*2017*

*Floor Space 287m<sup>2</sup>*

*Site Area 602.8m<sup>2</sup>*



*The second storey addition as seen from street view.*



*A seemingly complex staircase maximises the practicality of family living as it carves through the ground floor to the first floor.*



*A traditional use of the A frame ceiling to heighten the sense of comfort in the master bedroom.*



The Design Concept was strongly informed by the desire to transform the face brick and tiled roof single storey project home into an elegant family home with living areas connected to the beautiful rear garden by a glazed garden pavilion.

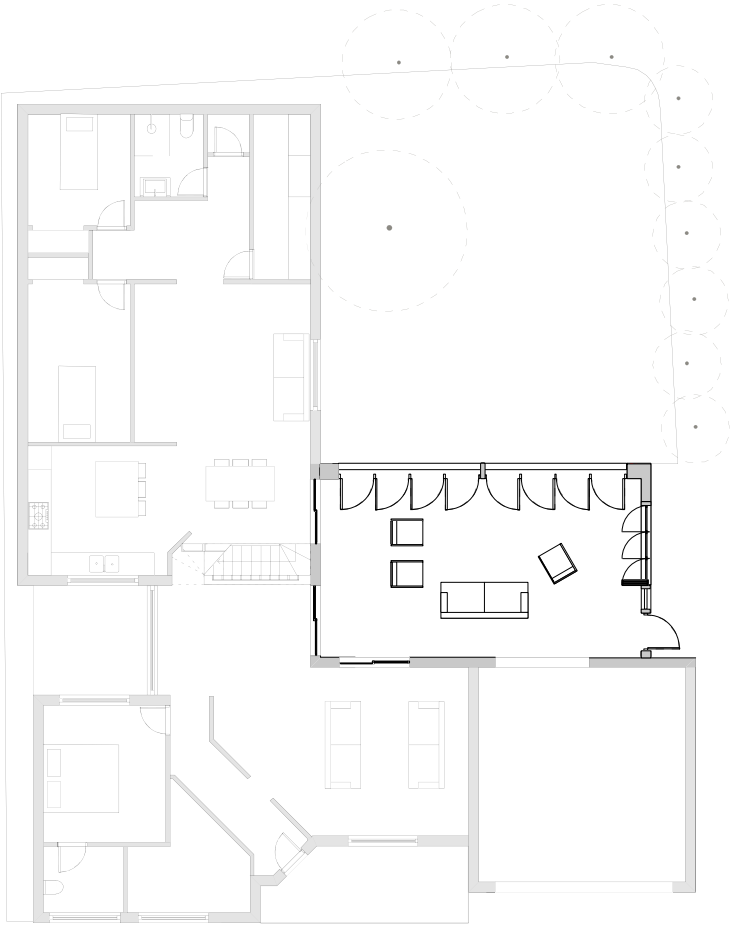
To the street the second storey addition presents a singular form, opening up to the views and light of the North facing rear aspect. Feature side windows punctuate the gabled ends with prominent steel surrounds, giving character to the street front to complement and contrast the existing without replicating or dominating it.

The Garden Pavilion has been designed to function as both an outdoor room as well as a covered conservatory. There is a wall of bifold doors facing the garden, designed to open and close up the room as required. With a timber battens lined ceiling, the glazed roof of the pavilion sits partially below the large verandah of the second storey bedroom addition.

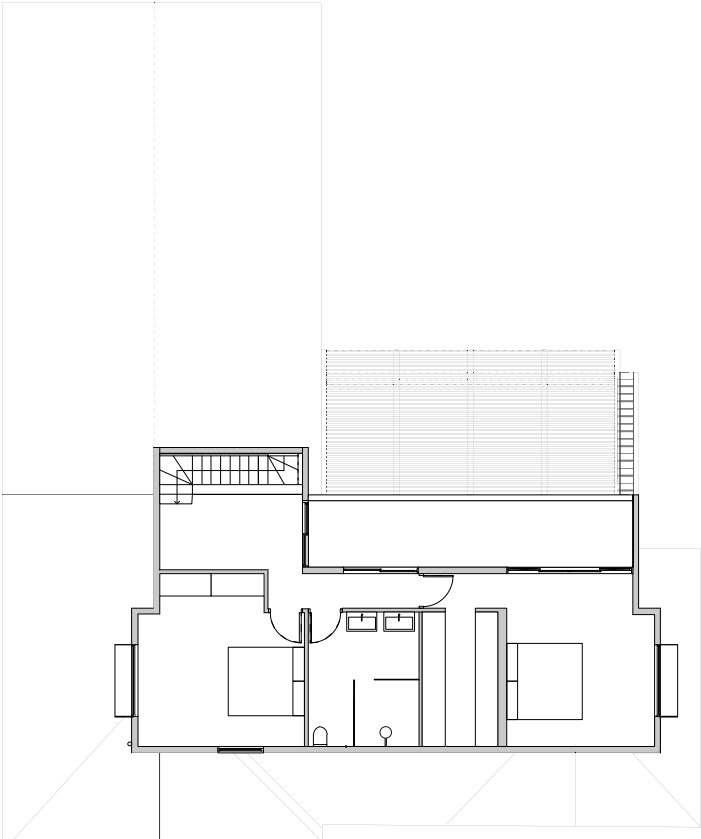
A feature stair connects the new second storey addition to the existing living room. Designed with a wall of Joinery to the front and back of the stair, the timber and steel elements appear to float between the two. A removable bookshelf conceals the link between the front and rear of the house, creating privacy between two potentially separate dwellings.

The design and materials of the new additions and pavilion are distinctly European in form and style to reflect the cultural heritage of the clients.

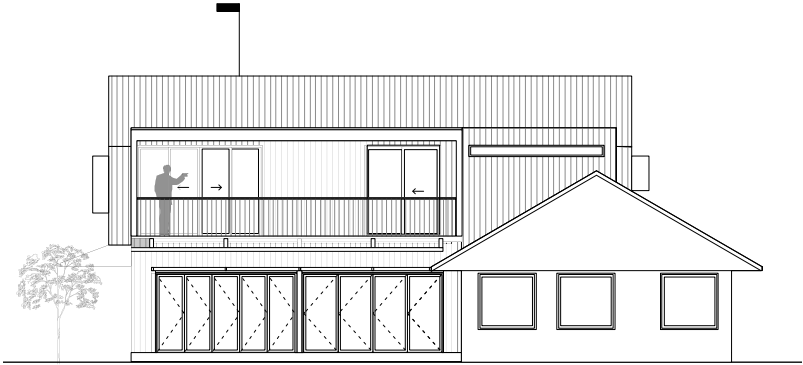
Pavilion House



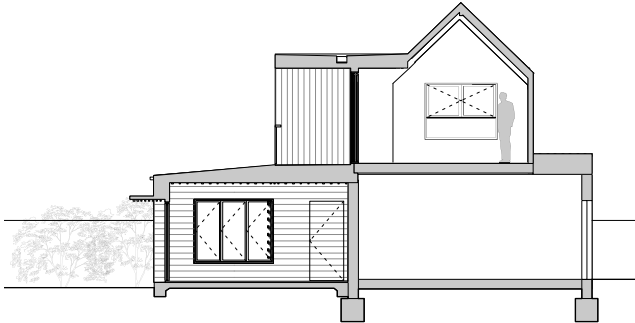
Ground Floor Plan  
1:200 @ A4



First Floor Plan  
1:200 @ A4



Rear Exterior Elevation  
1:200 @ A4



Short Section  
1:200 @ A4