

Courtyard House

Alterations & Additions

Private Residence

Five Dock, Sydney

2014

Floor Space 172m²

Site Area 368m²



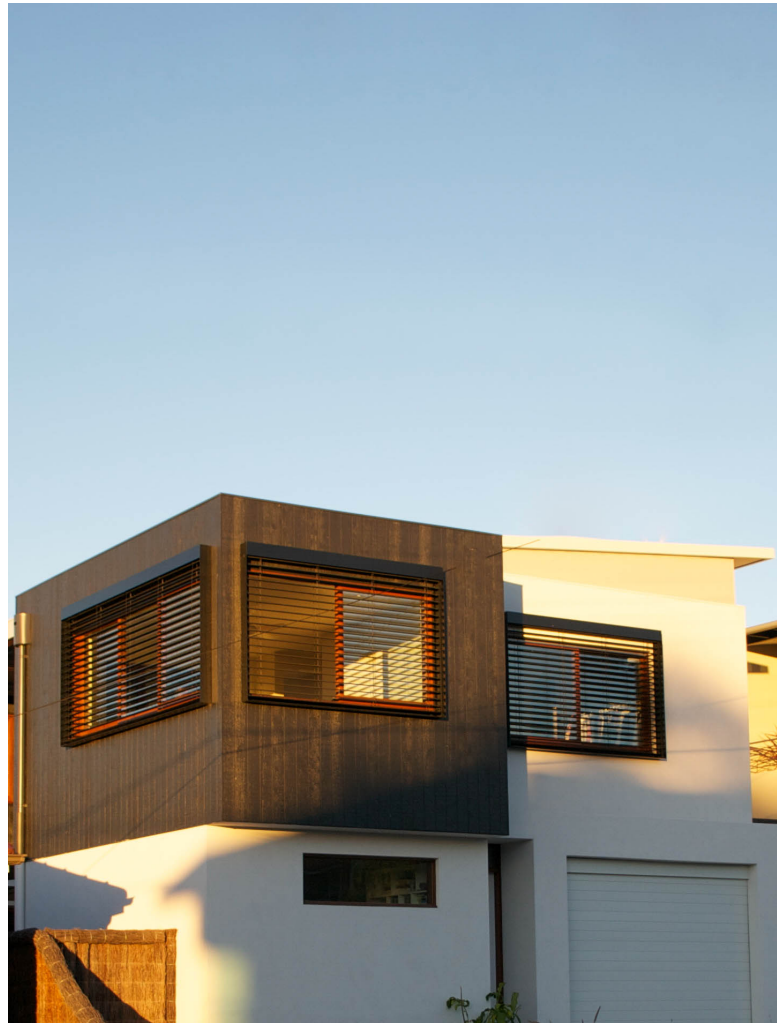
Rear exterior view with a considered landscape design.



Raw and natural finishes to the courtyards to soften the interior and exterior relationship.



Simple and flushed finishes to the Ensuite.



Designed as an affordable and sustainable family home to replace a single storey Post-War bungalow, typical to Five Dock, a series of courtyards are inserted into a linear layout to achieve the highest energy efficiency possible on the East-West facing site. The courtyards also allow for the garden to become an integral part of the home.

The public and private functions are separated over the two levels with the exception of a first floor loggia positioned to be a private lounge room off the master bedroom or a room to share with friends while taking in West facing water views of the Bay at the bottom of the street.

The open plan Living and Dining Room at the rear of the house takes in the rear garden while the Kitchen overlooks the pool and central courtyard, bringing greenery and breezes into the centre of the home.

Natural ventilation is further enhanced by the gallery corridor over two levels adjacent to an open stair and courtyards, encouraging breezes to flow through the levels of the home for passive cooling.

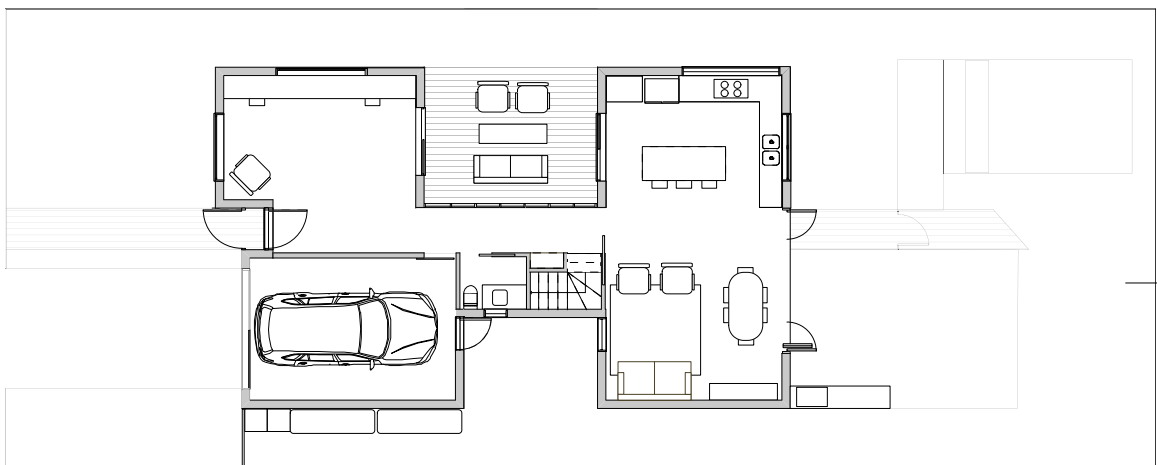
Rooms can be closed into compartments to improve energy. Materials have been chosen specifically to improve the Passive Environmental Control and affordability efficiency of the home, with a Concrete Slab and walls selected for the Ground Floor to increase the retention of heat in Winter and cooling in Summer.

The simple colour palette is highlighted by soft grey tiles and natural timbers with a blackened timber cladding to the First Floor to recede the form in contrast to the surrounding red brick and terracotta tile context.

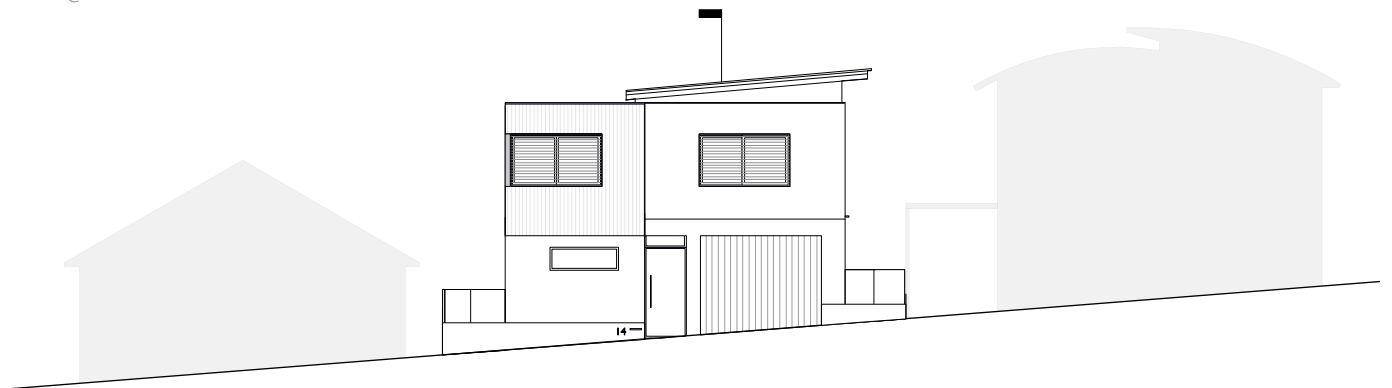
Courtyard House



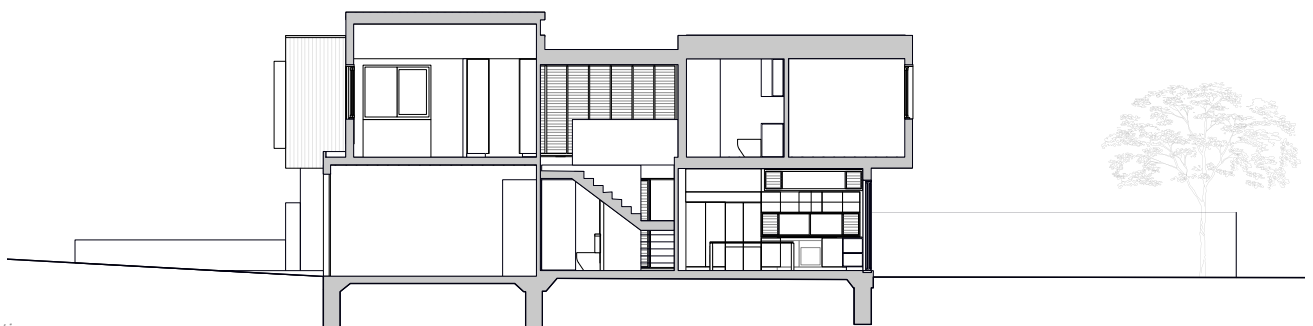
First Floor Plan
1:200 @ A4



Ground Floor Plan
1:200 @ A4



Front Exterior Elevation
1:200 @ A4



Long Section
1:200 @ A4