

Highlight House

Alterations & Additions

Private Residence

Willoughby, Sydney

2017

Floor Space 230m²

Site Area 500.8m²



Pocket sliding doors to create a seamless extension of the dining space to the verandah.



Glass sliding doors to frame a view from the dining room.



Timber hood surrounding the kitchen feature window. Side of the house access has been activated with considered landscape design.



The Highlight House is an alteration and addition to a semi-detached house in Willoughby. The living areas were well oriented and functional of the existing home yet they did not connect to the enormous rear garden lined with tall mature trees, nor take full advantage of the Northern aspect.

A small addition was added to the north-facing side of the living room to accommodate a new dining room adjacent to the new large wrap around verandah. Highlight windows feature in this space, creating a room within a room, introducing light and views while further enhancing the subtle division of new and old while

The cantilevered verandah is an interpretation of the traditional Australian vernacular married with the essence of the Japanese Temple, floating lightly above the ground, to reflect the combined cultural heritage of the clients. The detailing is simple and contemporary.

A combination of painted brick and timber are used to sensitively complement and contrast to the existing face brick masonry structure. Timber was chosen for the structure, cladding and flooring as it is cost effective, sustainable, durable and timeless.

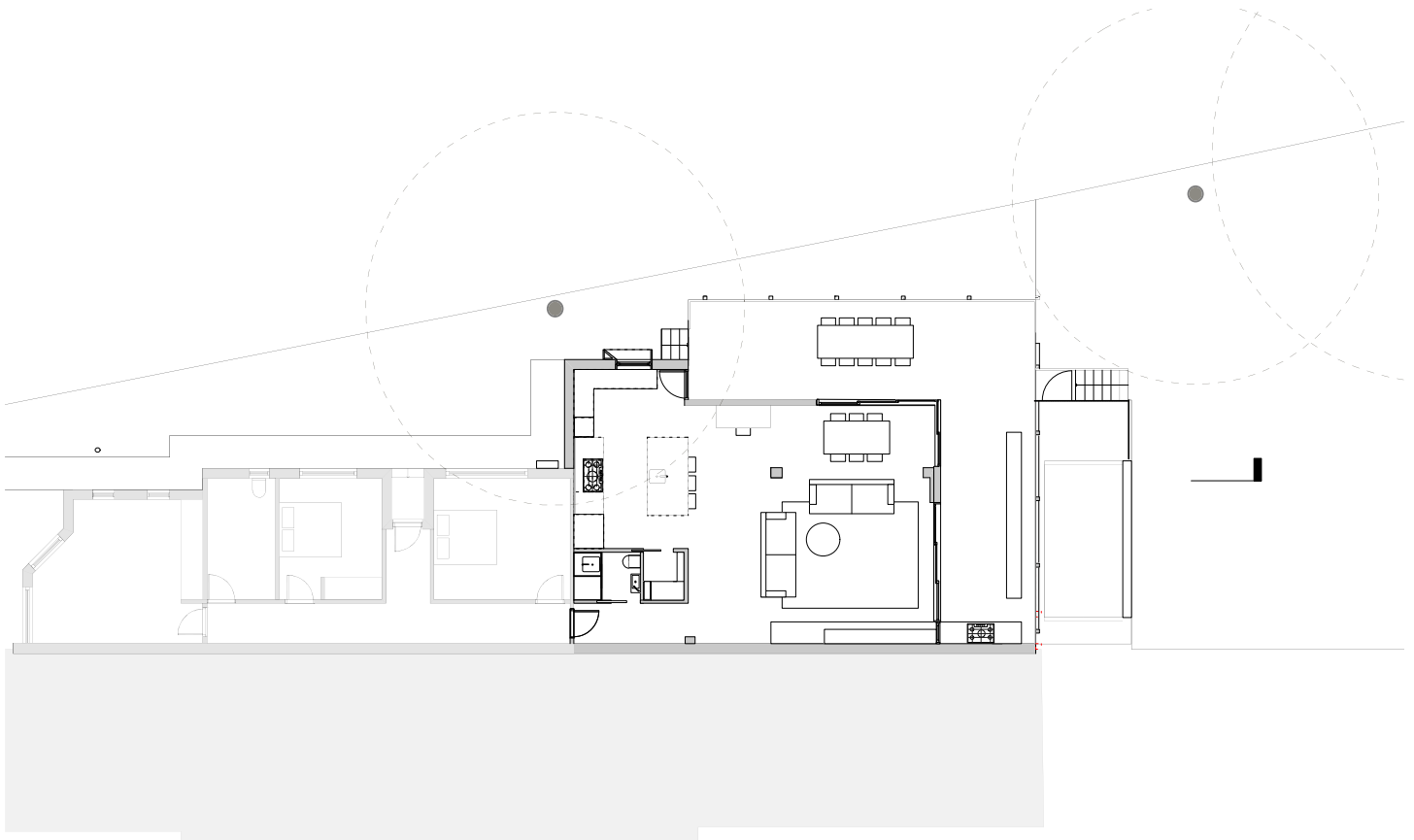
The timber cladding and flooring creates a seamless transition from inside to out. The cladding and flooring adds warmth and character to enable the new rear addition to sit easily within the landscape, framed by tall trees.

A new pool extends the view from the verandah out to the garden and sits raised off the ground to be easily accessed from the living areas. The base of the pool is lined in Timber cladding to give this element a solid yet textured aesthetic.

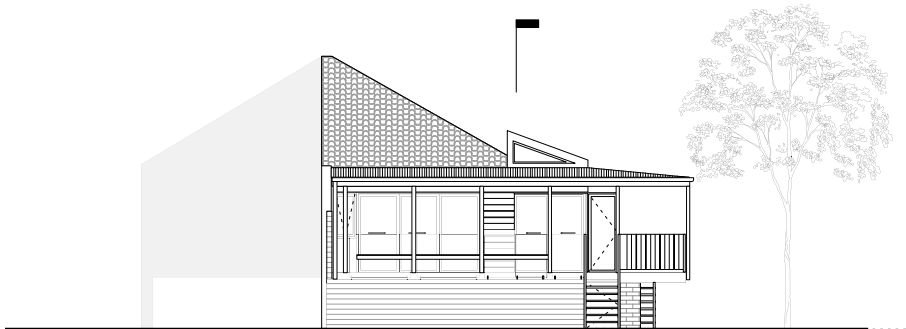
The new kitchen and living areas use of timber has create a beautiful and striking addition to the house. A simple solution yet so appropriate for the context, climate and cultural expression.

Highlight House

ssd studio >



Ground Floor Plan
1:200 @ A4



Rear Extension Elevation
1:200 @ A4



Long Section
1:200 @ A4