

Flipped House

Alterations & Additions

Private Residence

Paddington, Sydney

2016

Floor Space 200m²

Site Area 152.7m²



Soft grey finishes to the kitchen with strong accents from the spider-vein marble island.



A threshold that bleeds the kitchen interior to the rear courtyard creating a seamless space.



Simple, minimal but functional finishes to the bathroom



A large three storey Terrace House in the Paddington Heritage Conservation Area was originally configured to accommodate two dwellings independently, with separate entrances from the street.

Current Council controls prevented the division of the Terrace into separate dwellings, so to provide a better indoor outdoor connection for the informal living areas at Lower Ground, the Kitchen was flipped to the lower level and a new bedroom positioned in it's original location.

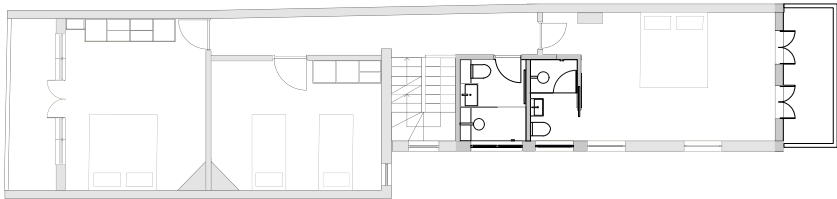
While the heritage elements of the house were retained, the front formal living and dining rooms that are located at street level were opened up to create a stronger sense of space that reflects contemporary living. Rooms become fluid and flexible rather than having a singular function and light and breezes enter the rooms, further enhanced by the existing high ceilings.

The Lower Ground Family Room contains a huge wall of joinery to discreetly hide a desk and built in bed. The Bathrooms are updated with a contemporary aesthetic to create a seamless consistent language that gently complements and contrasts to the ornate period features of the home.

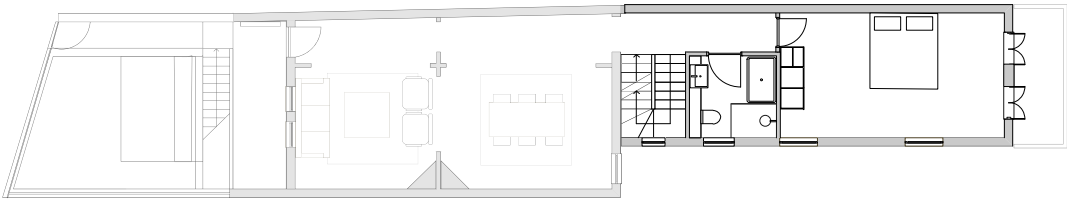
The rear balconies are upgraded with contemporary yet sensitive detailing to reflect the new Interior elements that simply and elegantly blend the old with the new.

The contemporary kitchen is positioned between the family room. An elegant yet informal courtyard becomes the space to live and entertain.

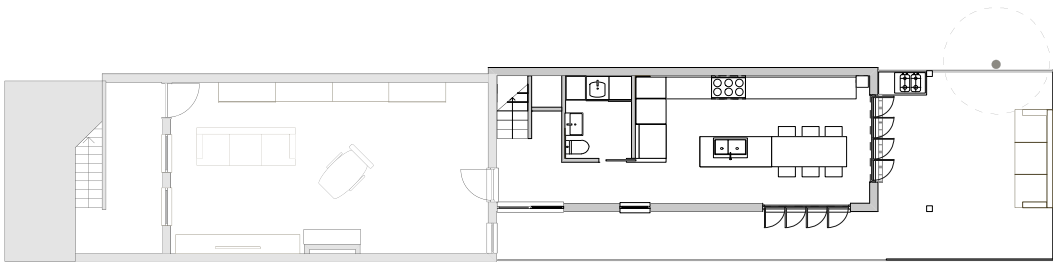
Flipped House



First Floor Plan
1:200 @ A4



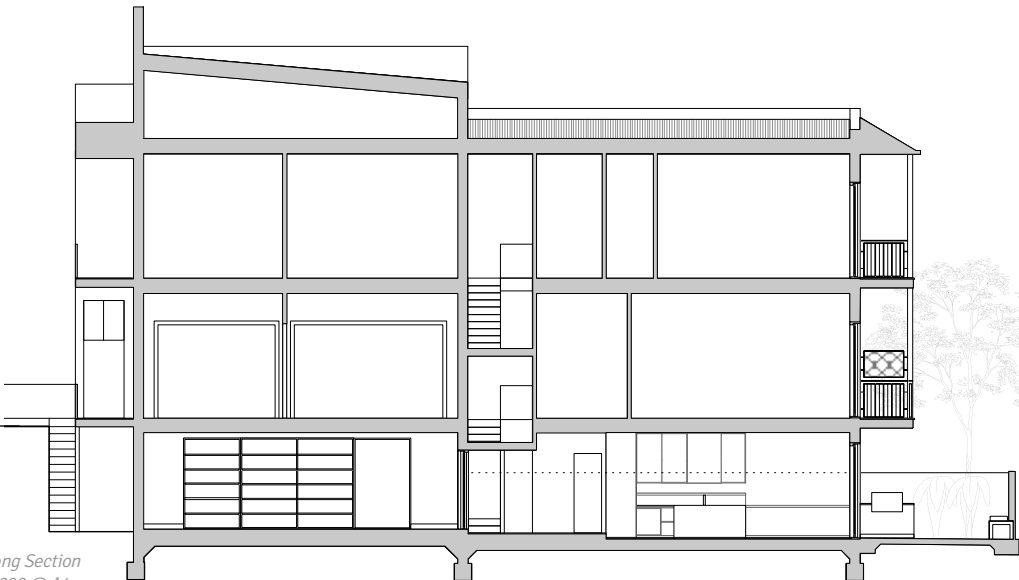
Ground Floor Plan
1:200 @ A4



Lower Ground Floor Plan
1:200 @ A4



Rear Elevation
1:200 @ A4



Long Section
1:200 @ A4